



جامعة الكويت  
KUWAIT UNIVERSITY

# **Ivanti VPN Guide For Windows Users (Non-KU Users) ALL KU Locations EXCEPT HSC**



Kuwait University  
Center of Information Systems  
IT Security Department  
March 2025

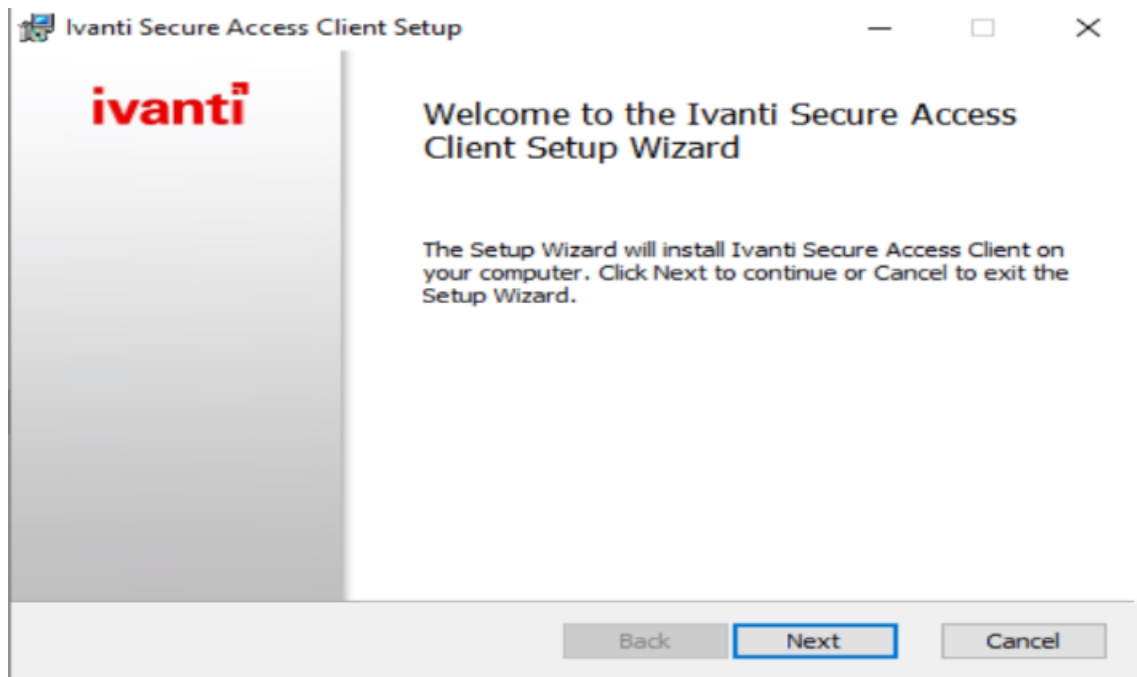
Please Follow the below instructions to deploy Ivanti VPN on Windows  
(ALL KU Locations EXCEPT HSC)

**Note: This Manual is for users who DON'T have KU ID**

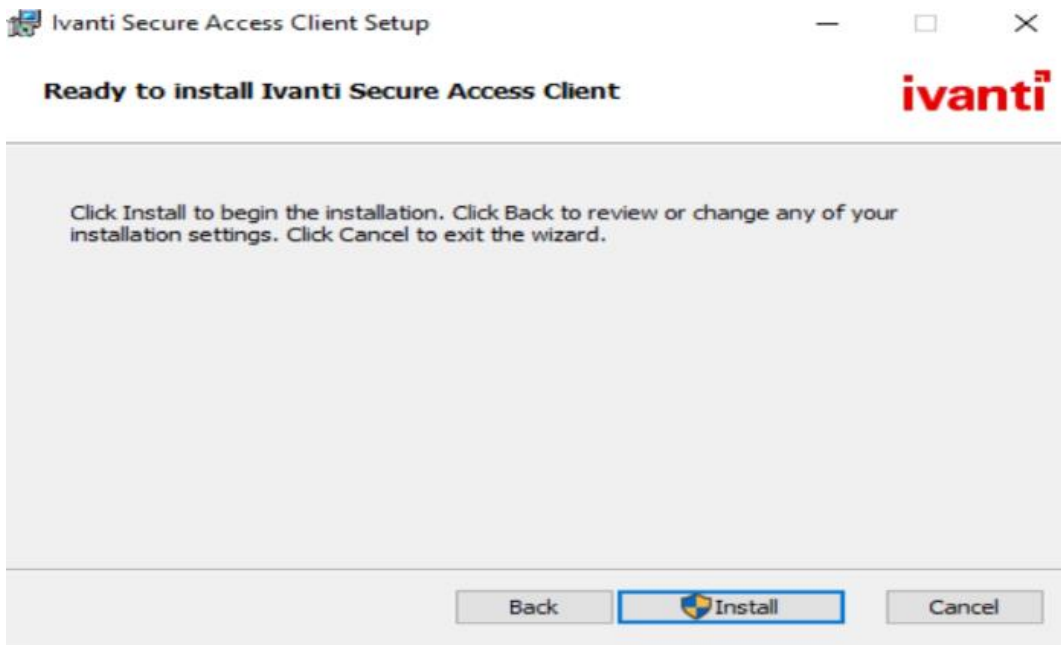
- 1- Download Client Software on your computer using the following link:  
<https://ku-vpn.ku.edu.kw/dana-na/jam/getComponent.cgi?command=get;component=PulseSecure;platform=x64>
- 2- Click on the installer MSI file to start client software installation.



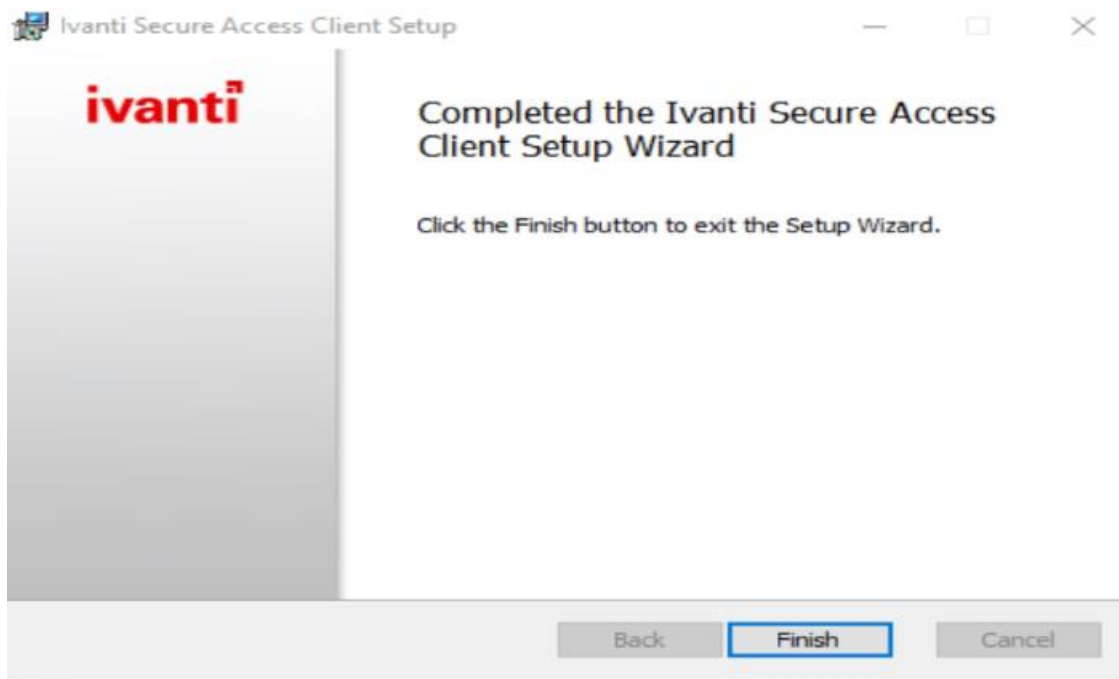
- 3- The installer will run as below. Click on **Next** to proceed.



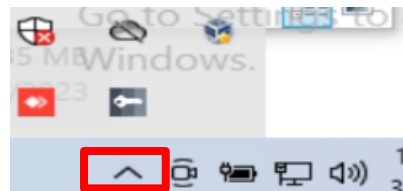
4- Click on **install** to start client installation.



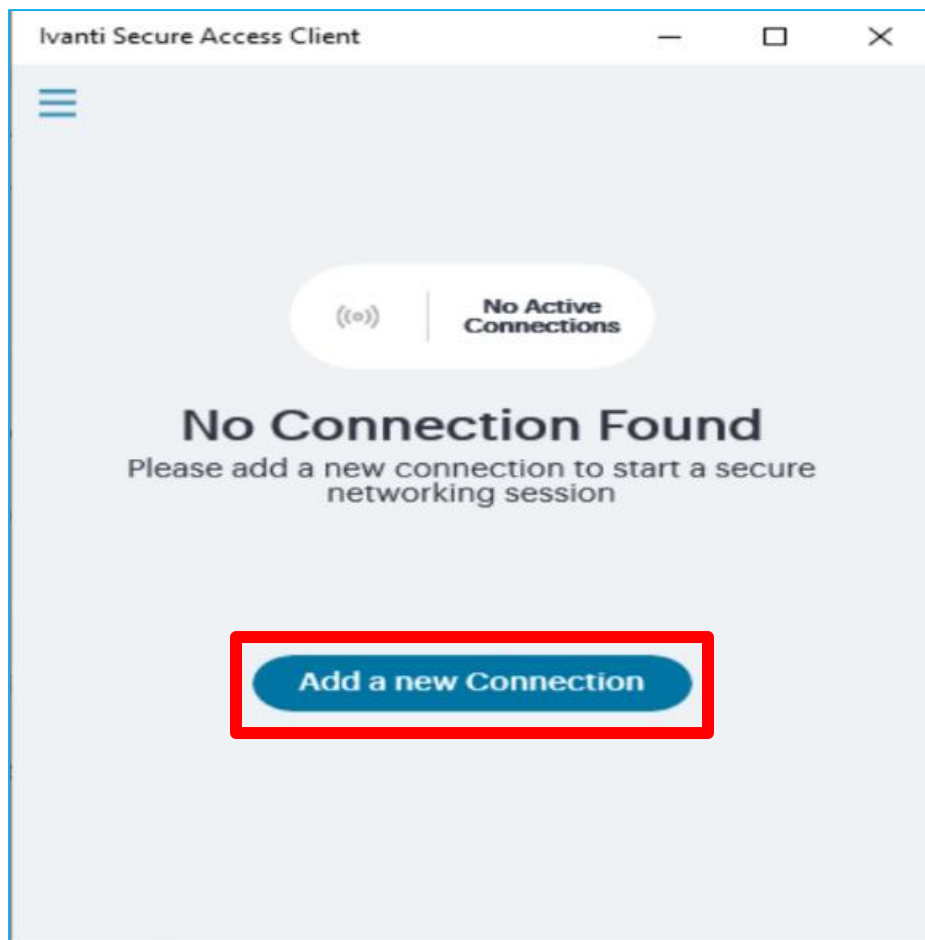
5- Click on **Finish** to close installer and run the client software.



- 6- You can double click on the client on the toolbar to open main window as shown below.



- 7- The main window is as shown below. Click on **Add a new connection**.



8- Fill the fields as shown below:

**Type:** Policy Secure (UAC) or Connect Secure (VPN)

**Name:** KU-VPN

**Server URL:** <https://ku-vpn.ku.edu.kw/local>

Click on **Add** to save connection details

Then **Connect**

Ivanti Secure Access Client

### Add Connection

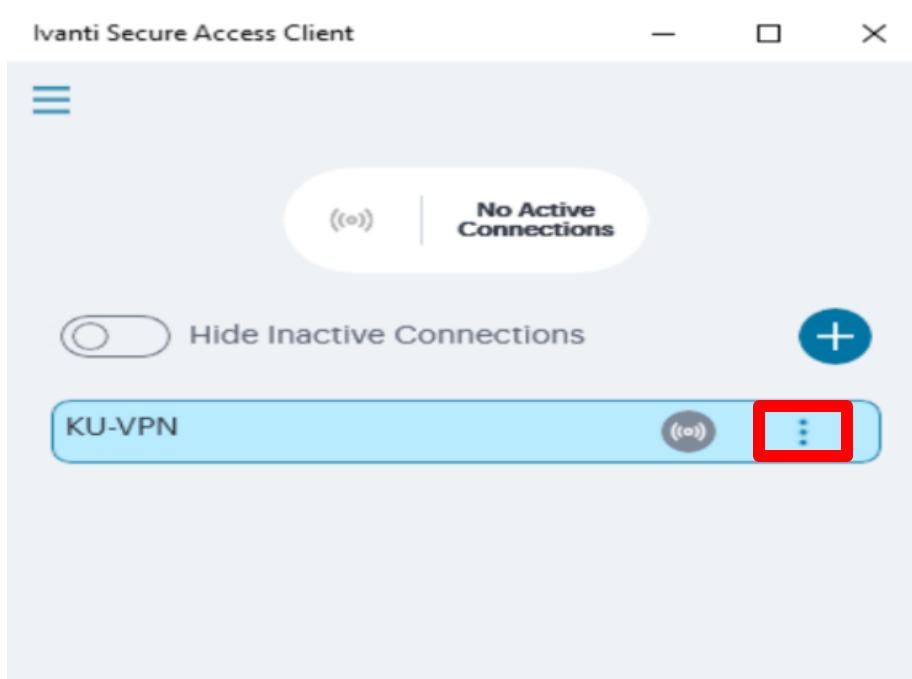
**Type**  
Policy Secure (UAC) or Connect Secure (VPN) ✓  
Select the connection type to add

**Name**  
KU-VPN

**Server URL**  
<https://ku-vpn.ku.edu.kw/local> ✕

**Add** **Cancel** **Connect**

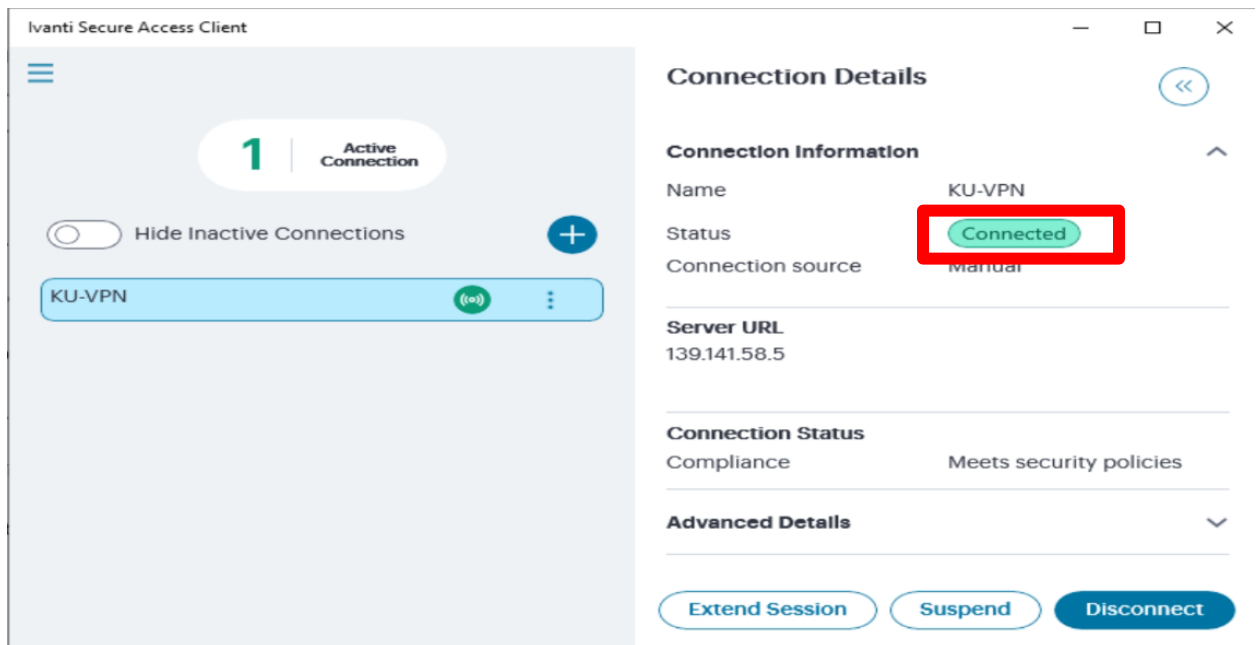
- 9- Click on **connect icon** next to KU-VPN (VPN Connection Name)



- 10- Fill the Login info Given by KU IT Security Team (BY REQUEST) then **Sign In**

The screenshot shows the IVANTI CONNECT SECURE login screen. At the top, it says "IVANTI CONNECT SECURE" in bold. Below this is the instruction "Please sign in to begin your secure session." There are two input fields: "USERNAME" with the text "1234567" and "PASSWORD" with masked characters (dots). Below the input fields is a green button labeled "Sign In".

- 11- The Connection status in should appear in **green**.  
The below buttons can be used to extend / Suspend or to disconnect  
VPN connections if required



**NOW, you can use your VPN**

Any other issues? Feel free to contact the KU information security team at:

**[itsecurity@ku.edu.kw](mailto:itsecurity@ku.edu.kw)**